



COMMUNITY GUIDE

ABOUT

Located just off Boring Road in Farragut, Stonemeade offers maintenance-free living close to community parks, golf courses, lake access, and the shops at Turkey Creek. Residents choose from 8 thoughtfully designed floor plans, including 2 brand-new options crafted around the features today's buyers want most, with spacious open-concept layouts and 3-car garages included with every home.

Every Stonemeade home is finished to our Diamond Plus Level standards, featuring soaring 10-foot main-level ceilings, gourmet kitchens with KitchenAid appliances and granite countertops, and hardwood flooring throughout the main living area. With lawn care and trash pickup included, Stonemeade delivers a low-maintenance lifestyle that gives you more time to relax and explore everything the local area has to offer.

AMENITIES

- A serene 32-home community conveniently located in Farragut
- Low maintenance benefits with lawn care & trash pickup included
- 8 designer floor plans all with an included 3-car garage
- Luxurious features including full brick and stone exteriors and many high-end finishes
- Irrigation & sod for the entire yard (except slopes & banks)
- Minutes from local parks, Ft Loudoun Lake, the Shops at Turkey Creek, and Farragut Schools

CONTACT US

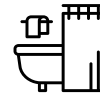
DOVER



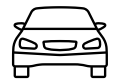
Home Features



4-5
Bedrooms



3.5-4.5
Bathrooms



3
Garage Bays


Square Footage

Total Living Area 3561+ Sq. Ft.

1st Floor 2290+ Sq. Ft.

2nd Floor 1271+ Sq. Ft.

Contact

 865-966-8700

 info@saddlebrookproperties.com

 saddlebrookproperties.com

Social



Saddlebrook Properties, LLC uses pictures, elevations and floor plans for illustrative marketing purposes only. Saddlebrook's working construction documents & codes take precedent in guiding the constructions of each home. Measurements, prices and specifications are subject to change without notice. All offerings are subject to errors and omissions

DOVER

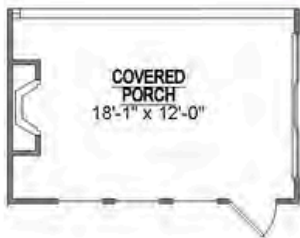
1st Floor

Key Features

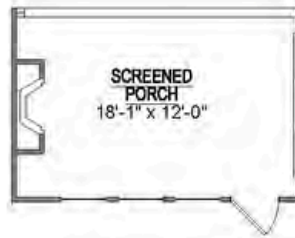
- 3-Car Garage
- Dramatic Vaulted Great Room and Kitchen Area
- Elegant Owner's Suite with Luxury Ensuite
- Private Covered Porch Retreat
- Grand 10' Ceilings with 8' Doorways
- Main-Level Guest Suite
- 2 Guest Bedrooms and Bath



1st Floor Options



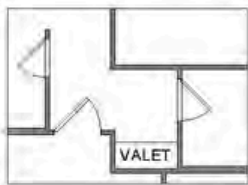
Optional Outdoor
Fireplace



Optional Screened
Porch



Optional Deluxe
Owners Bath



Optional Valet



Optional Study

DOVER

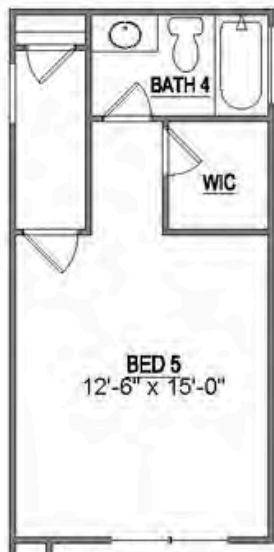
2nd Floor

Key Features

- Versatile Loft Area
- Spacious Attic Storage
- Additional Finished Storage
- 1 Bedrooms
- 1 Bathroom



2nd Floor Options



Optional Bed 5
& Bath 4

EDWIN



EUROPEAN



FARMHOUSE

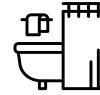


FRENCH COUNTRY

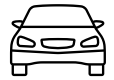
Home Features



3-5
Bedrooms



2.5-4
Bathrooms



3
Garage Bays


Square Footage

Total Living Area 3292+ Sq. Ft.

1st Floor 2157+ Sq. Ft.

2nd Floor 1135+ Sq. Ft.

Contact

 865-966-8700

 info@saddlebrookproperties.com

 saddlebrookproperties.com

Social



Saddlebrook Properties, LLC uses pictures, elevations and floor plans for illustrative marketing purposes only. Saddlebrook's working construction documents & codes take precedent in guiding the constructions of each home. Measurements, prices and specifications are subject to change without notice. All offerings are subject to errors and omissions

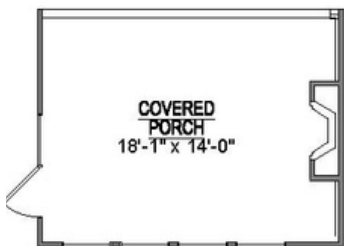
1st Floor

Key Features

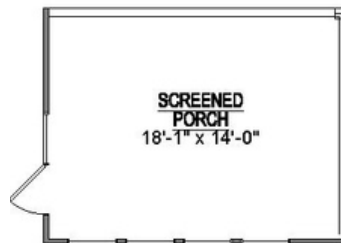
- 3-Car Garage
- Luxurious Main-Level Owner's Suite with Spa-Inspired Ensuite
- Private Covered Porch Retreat
- Grand 10' Ceilings with 8' Doorways
- Main-Level Flex Room



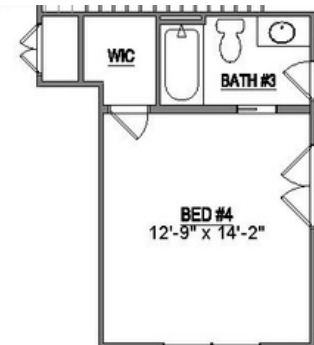
1st Floor Options



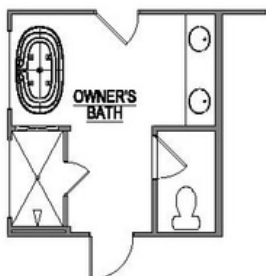
Optional Outdoor
Fireplace



Optional Screened
Porch



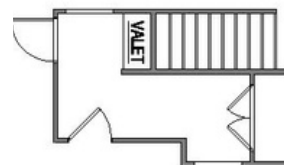
Optional Bed 4
& Bath 3



Optional Deluxe
Owners Bath



Optional Utility
Sink



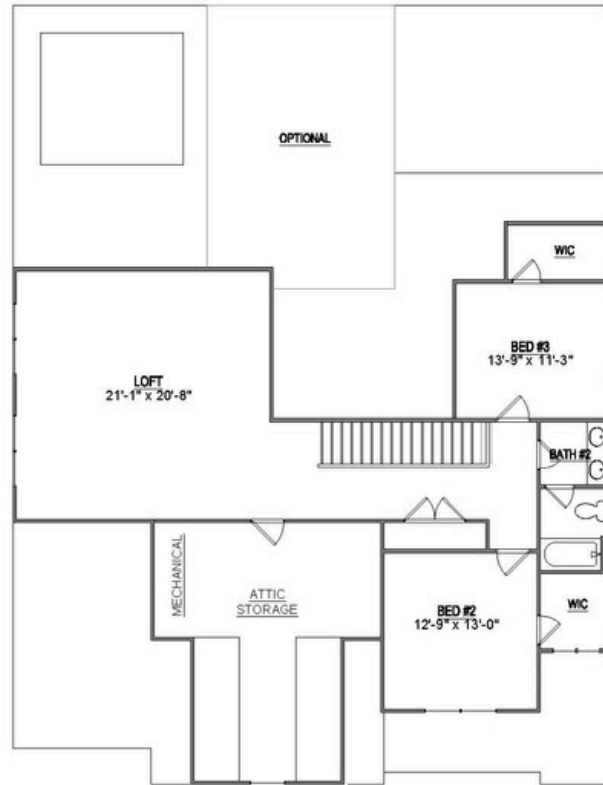
Optional Valet

Saddlebrook Properties, LLC uses pictures, elevations and floor plans for illustrative marketing purposes only. Saddlebrook's working construction documents & codes take precedent in guiding the constructions of each home. Measurements, prices and specifications are subject to change without notice. All offerings are subject to errors and omissions.

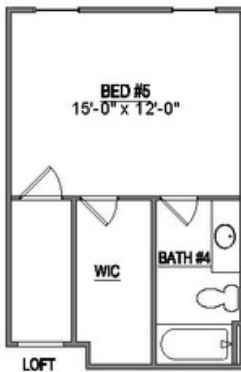
2nd Floor

Key Features

- Expansive Loft Area
- Generous Attic Storage
- 2 Bedrooms
- 1 Bathroom



2nd Floor Options



Optional Bed 5 & Bath 4

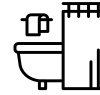
EMORY



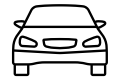
Home Features



4-5
Bedrooms



3-4
Bathrooms



3
Garage Bays


Square Footage

Total Living Area 3133+ Sq. Ft.

1st Floor 1977+ Sq. Ft.

2nd Floor 1136+ Sq. Ft.

Contact

 865-966-8700

 info@saddlebrookproperties.com

 saddlebrookproperties.com

Social

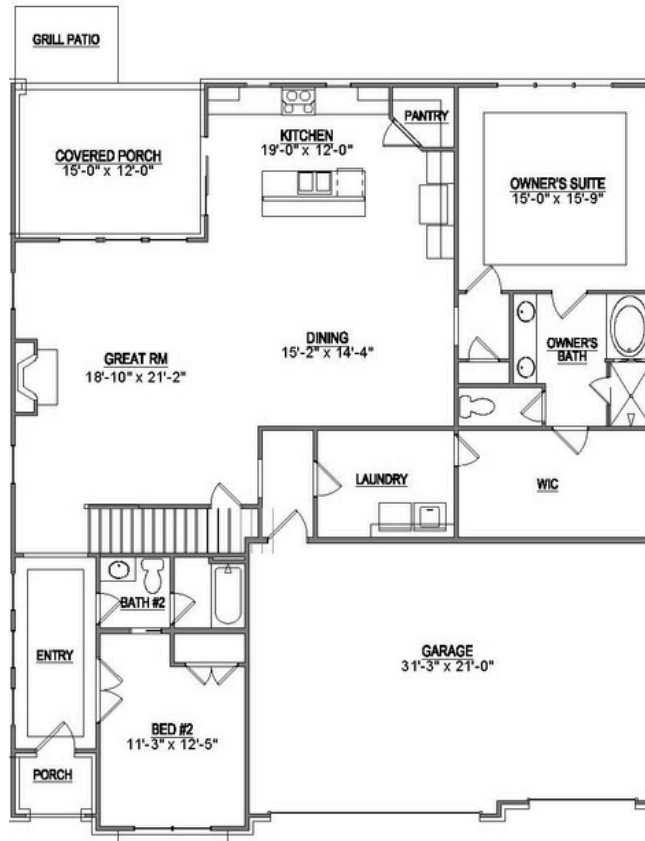


Saddlebrook Properties, LLC uses pictures, elevations and floor plans for illustrative marketing purposes only. Saddlebrook's working construction documents & codes take precedent in guiding the constructions of each home. Measurements, prices and specifications are subject to change without notice. All offerings are subject to errors and omissions

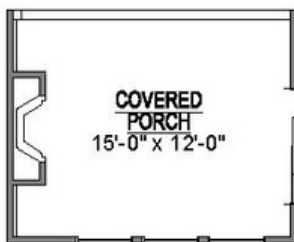
1st Floor

Key Features

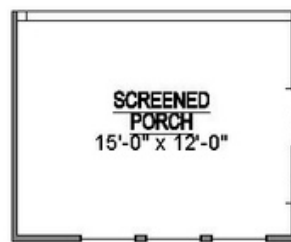
- 3-Car Garage
- Luxurious Main-Level Owner's Suite
- Private Covered Porch Retreat
- Grand 10' Ceilings with 8' Doorways
- Main-Level Guest Suite



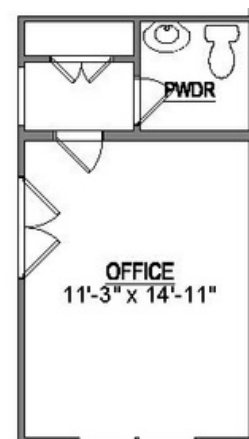
1st Floor Options



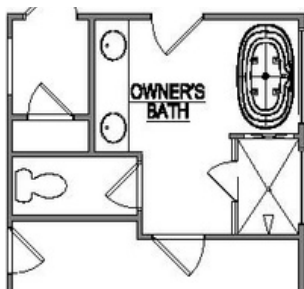
Optional Outdoor
Fireplace



Optional Screened
Porch



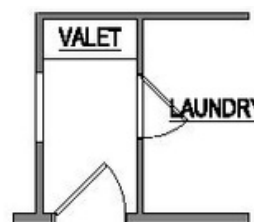
Optional Office
& Powder Rm



Optional Deluxe
Owners Bath



Optional Utility
Sink



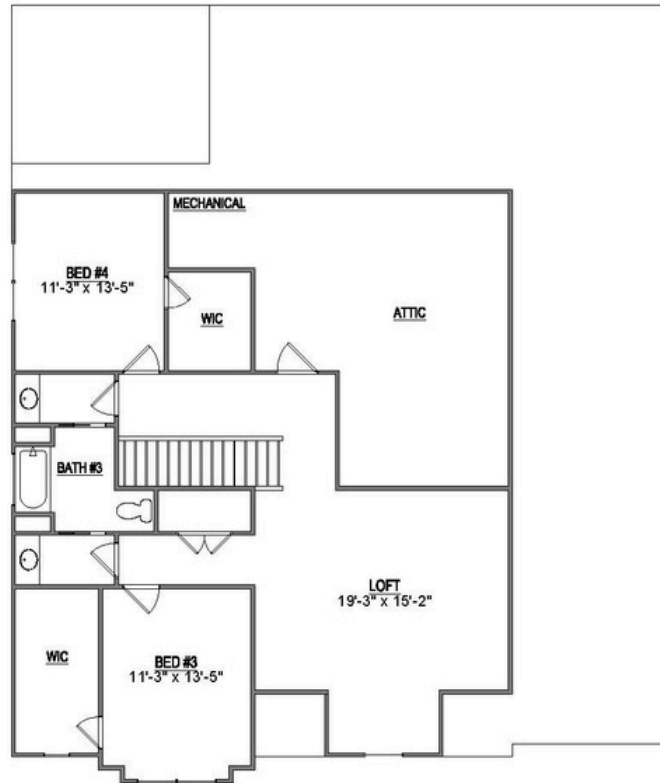
Optional Valet

Saddlebrook Properties, LLC uses pictures, elevations and floor plans for illustrative marketing purposes only. Saddlebrook's working construction documents & codes take precedent in guiding the constructions of each home. Measurements, prices and specifications are subject to change without notice. All offerings are subject to errors and omissions.

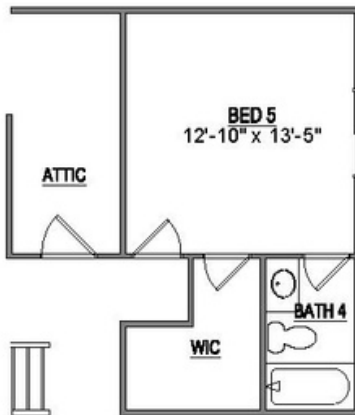
2nd Floor

Key Features

- Expansive Loft Area
- Generous Attic Storage
- 2 Bedrooms
- 1 Bathroom



2nd Floor Options



Optional Bed 5 & Bath 4

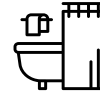
HOLSTON



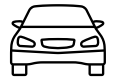
Home Features



4-5
Bedrooms



3-4
Bathrooms



3
Garage Bays


Square Footage

Total Living Area 3300+ Sq. Ft.

1st Floor 2232+ Sq. Ft.

2nd Floor 1068+ Sq. Ft.

Contact

 865-966-8700

 info@saddlebrookproperties.com

 saddlebrookproperties.com

Social



Saddlebrook Properties, LLC uses pictures, elevations and floor plans for illustrative marketing purposes only. Saddlebrook's working construction documents & codes take precedent in guiding the constructions of each home. Measurements, prices and specifications are subject to change without notice. All offerings are subject to errors and omissions

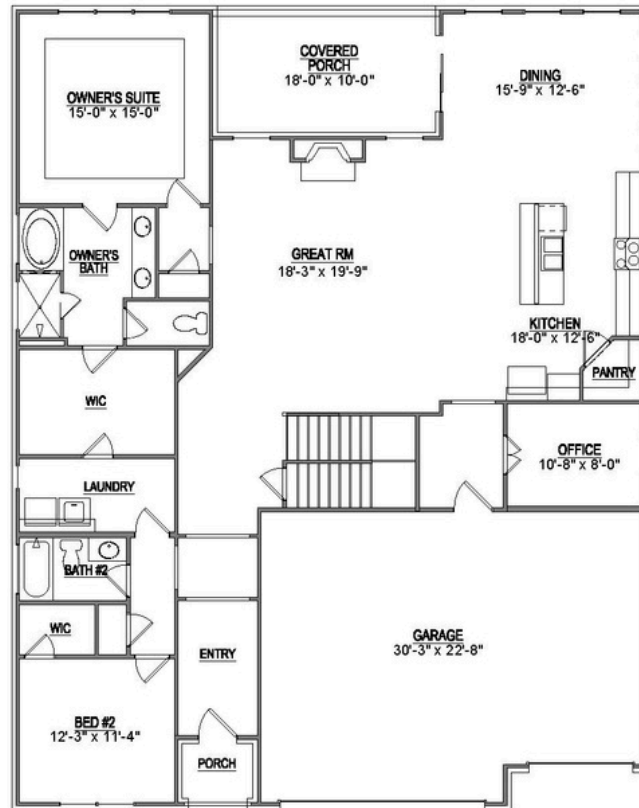
HOLSTON



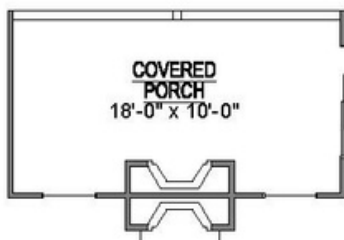
1st Floor

Key Features

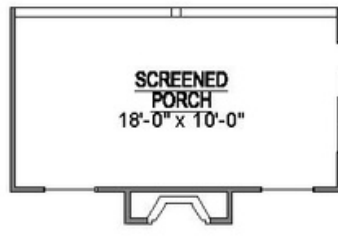
- 3-Car Garage
- Dramatic 2-Story Entry
- Elegant Owner's Suite with Luxury Ensuite
- Private Covered Porch Retreat
- Grand 10' Ceilings with 8' Doorways
- Main-Level Guest Suite



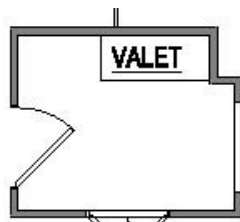
1st Floor Options



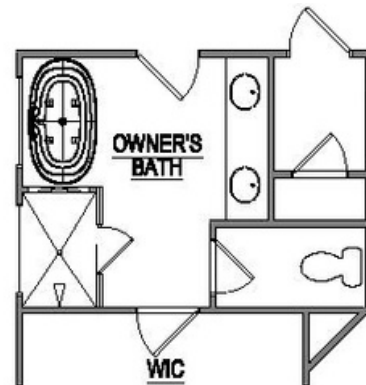
Optional Outdoor
Fireplace



Optional Screened
Porch



Optional Valet

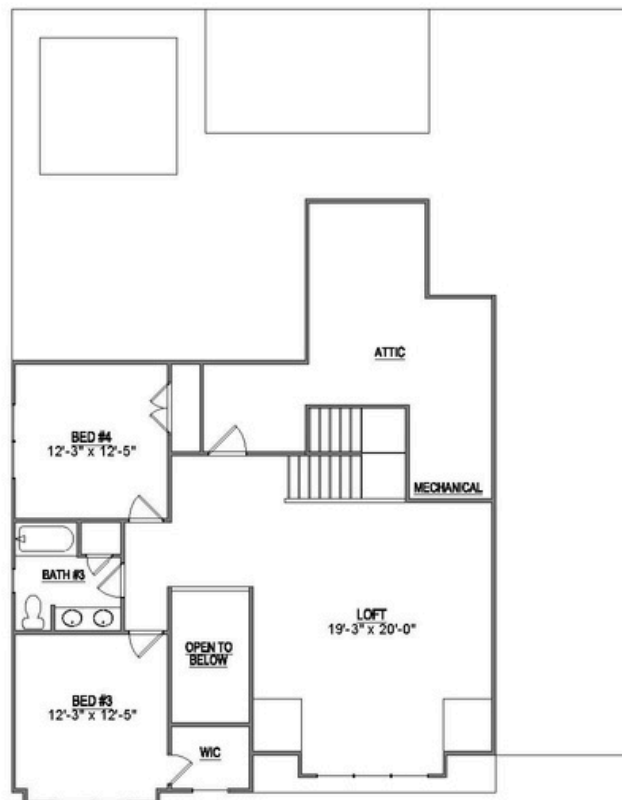


Optional Deluxe
Owners Bath

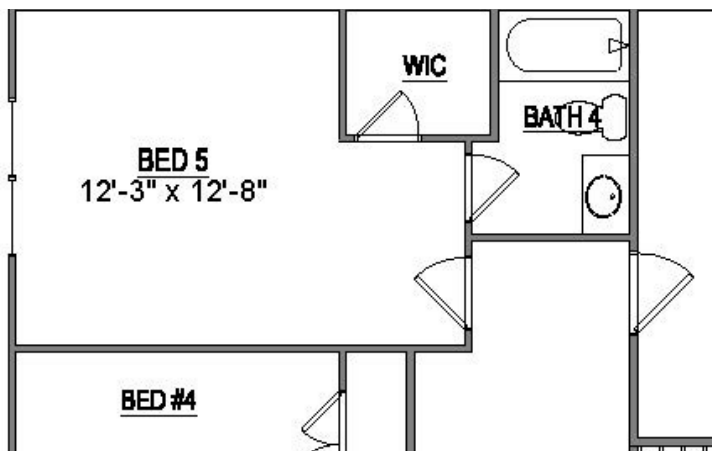
2nd Floor

Key Features

- Versatile Loft Area
- Spacious Attic Storage
- 2 Bedrooms
- 1 Bathroom



2nd Floor Options



Optional Bed 5
& Bath 4

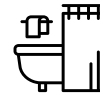
OXFORD



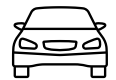
Home Features



4-5
Bedrooms



3-4
Bathrooms



3
Garage Bays


Square Footage

Total Living Area 3237+ Sq. Ft.

1st Floor 2098+ Sq. Ft.

2nd Floor 1139+ Sq. Ft.

Contact

 865-966-8700

 info@saddlebrookproperties.com

 saddlebrookproperties.com

Social



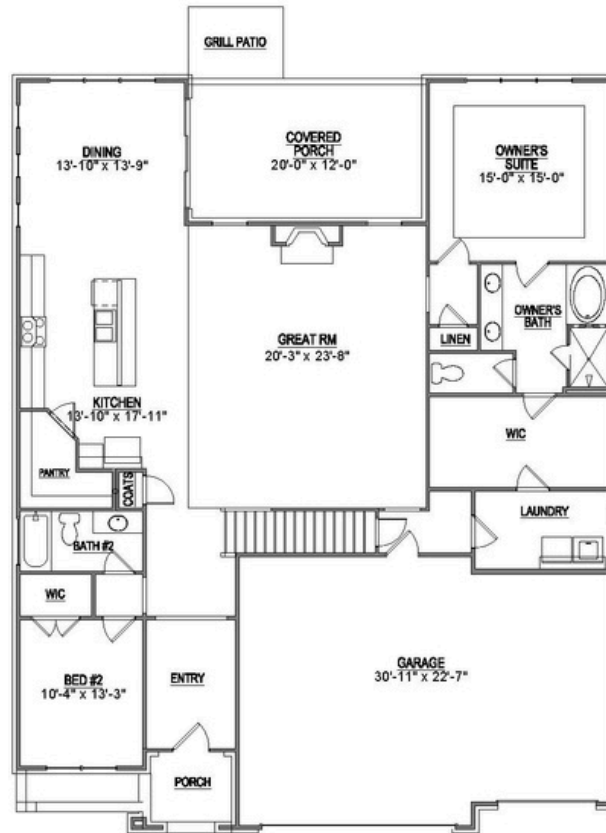
Saddlebrook Properties, LLC uses pictures, elevations and floor plans for illustrative marketing purposes only. Saddlebrook's working construction documents & codes take precedent in guiding the constructions of each home. Measurements, prices and specifications are subject to change without notice. All offerings are subject to errors and omissions

OXFORD

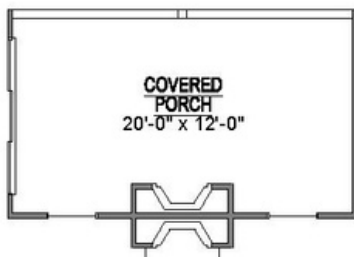
1st Floor

Key Features

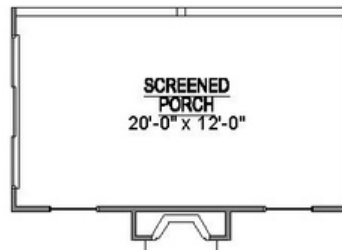
- 3-Car Garage
- Dramatic 2-Story Entry
- Owner's Suite with Spa-Inspired Ensuite
- Private Covered Porch Retreat
- Grand 10' Ceilings with 8' Doorways
- Main-Level Guest Suite
- Chef-Inspired Kitchen



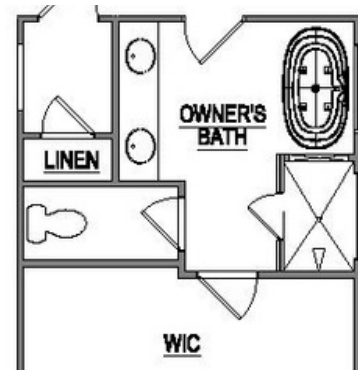
1st Floor Options



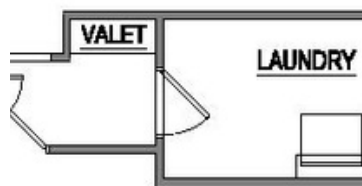
Optional Outdoor
Fireplace



Optional Screened
Porch



Optional Deluxe
Owners Bath



Optional Valet

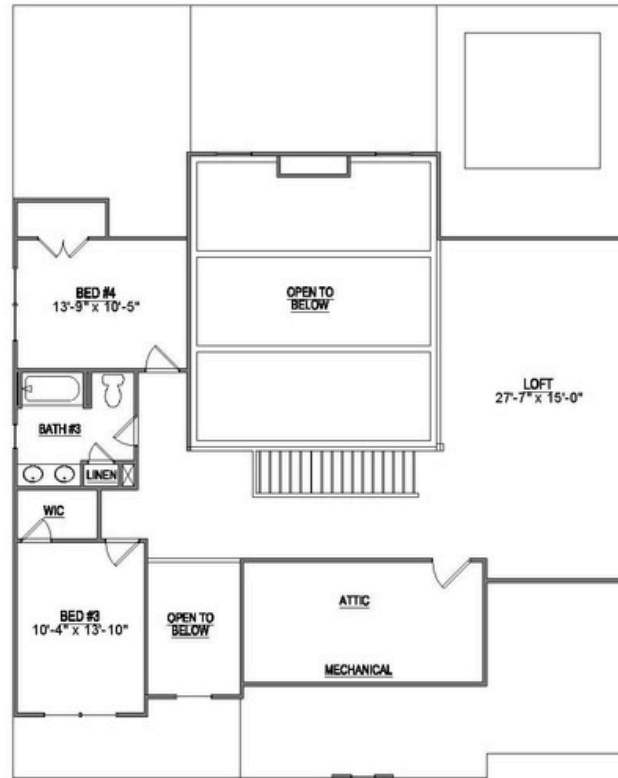
OXFORD



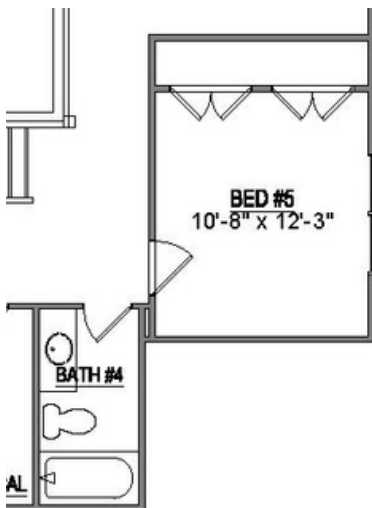
2nd Floor

Key Features

- Expansive Loft Area
- Generous Attic Storage
- 2 Bedrooms
- 1 Bathroom



2nd Floor Options



Optional Bed 5
& Bath 4

Saddlebrook Properties, LLC uses pictures, elevations and floor plans for illustrative marketing purposes only. Saddlebrook's working construction documents & codes take precedent in guiding the constructions of each home. Measurements, prices and specifications are subject to change without notice. All offerings are subject to errors and omissions.

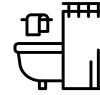
STAFFORD



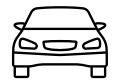
Home Features



4-6
Bedrooms



3-4
Bathrooms



3
Garage Bays


Square Footage

Total Living Area 3147+ Sq. Ft.

1st Floor 2112+ Sq. Ft.

2nd Floor 1035+ Sq. Ft.

Contact

 865-966-8700

 info@saddlebrookproperties.com

 saddlebrookproperties.com

Social



Saddlebrook Properties, LLC uses pictures, elevations and floor plans for illustrative marketing purposes only. Saddlebrook's working construction documents & codes take precedent in guiding the constructions of each home. Measurements, prices and specifications are subject to change without notice. All offerings are subject to errors and omissions

STAFFORD



1st Floor

Key Features

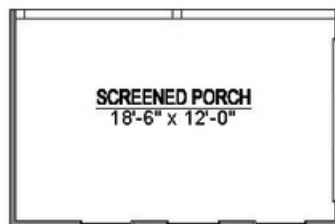
- 3-Car Garage
- Private Main-Level Owner's Suite
- Private Covered Porch Retreat
- Grand 10' Ceilings with 8' Doorways
- Main-Level Guest Suite
- Open Concept Living and Entertaining Spaces



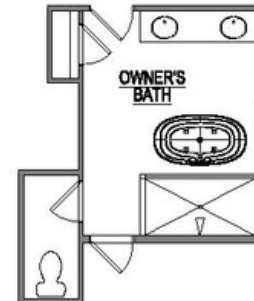
1st Floor Options



Optional Outdoor
Fireplace



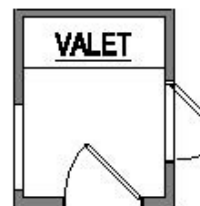
Optional Screened
Porch



Optional Deluxe
Owners Bath



Optional Utility
Sink



Optional Valet

Saddlebrook Properties, LLC uses pictures, elevations and floor plans for illustrative marketing purposes only. Saddlebrook's working construction documents & codes take precedent in guiding the constructions of each home. Measurements, prices and specifications are subject to change without notice. All offerings are subject to errors and omissions.

STAFFORD

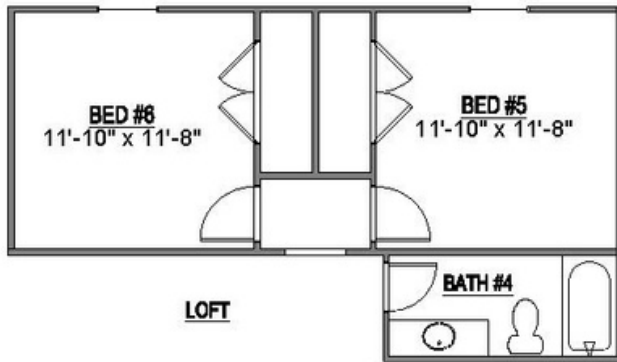
2nd Floor

Key Features

- Versatile and Spacious Loft Area
- Generous Attic Storage for Seasonal Items and More
- 2 Bedrooms
- 1 Bathroom



2nd Floor Options



Optional Bed 5, Bed 6 &
Bath 4

WINCHESTER



EUROPEAN



FARMHOUSE

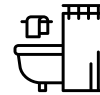


FRENCH COUNTRY

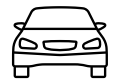
Home Features



4-5
Bedrooms



4
Bathrooms



3
Garage Bays


Square Footage

Total Living Area 3277+ Sq. Ft.

1st Floor 2206+ Sq. Ft.

2nd Floor 1071+ Sq. Ft.

Contact

 865-966-8700

 info@saddlebrookproperties.com

 saddlebrookproperties.com

Social



Saddlebrook Properties, LLC uses pictures, elevations and floor plans for illustrative marketing purposes only. Saddlebrook's working construction documents & codes take precedent in guiding the constructions of each home. Measurements, prices and specifications are subject to change without notice. All offerings are subject to errors and omissions

WINCHESTER



1st Floor

Key Features

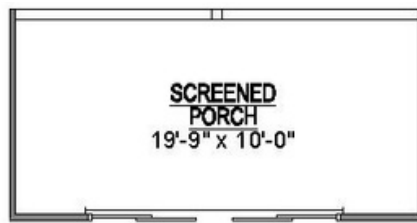
- 3-Car Garage
- Grand 2-Story Naturally Lit Entryway
- Private Covered Porch Retreat
- Eye-Catching Ceiling Detail in Great Room
- Luxurious Ensuite
- Main Level Guest Suite
- Dedicated Study



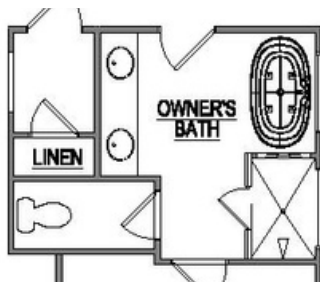
1st Floor Options



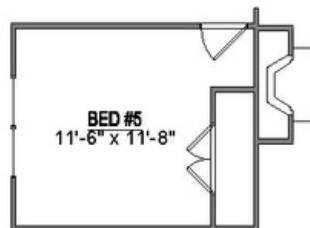
Optional Outdoor
Fireplace



Optional Screened
Porch



Optional Deluxe
Owners Bath



Optional Bed 5



Optional Coffee
Bar

Saddlebrook Properties, LLC uses pictures, elevations and floor plans for illustrative marketing purposes only. Saddlebrook's working construction documents & codes take precedent in guiding the constructions of each home. Measurements, prices and specifications are subject to change without notice. All offerings are subject to errors and omissions.

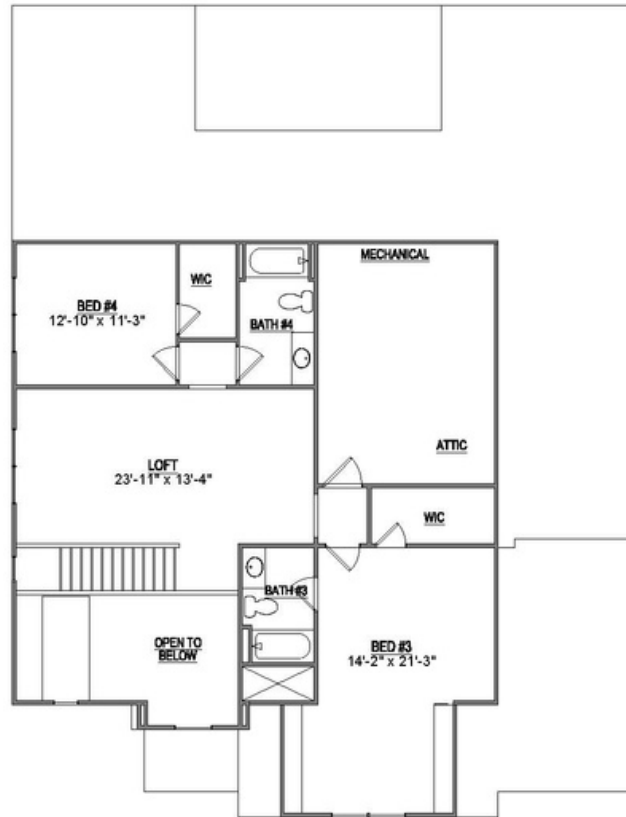
WINCHESTER



2nd Floor

Key Features

- Central Loft Area
- Generous Attic Storage
- 2 Bedrooms
- 2 Bathroom



2nd Floor Options