

THE
FOUNDRY
AT HARDIN VALLEY

COMMUNITY GUIDE

ABOUT

The Foundry at Hardin Valley is a peaceful community of only 27 homesites offering peaceful living with easy access to Knoxville, Farragut, and Oak Ridge.

The Foundry offers spacious homes featuring open-concept floor plans, modern finishes, and the convenience of 3-car garages included with every design. The community offers six brand-new floor plans, each thoughtfully crafted with our clients' most requested home features.

The Foundry is located just minutes from local shops and restaurants in Hardin Valley, the Shops at Turkey Creek, Melton Hill Park, Pellissippi State Community College, and Hardin Valley Schools. Outdoors enthusiasts will appreciate easy access to fishing, boating, and hiking at the nearby Melton Hill Park.

Explore our new floor plans, and create your home in The Foundry at Hardin Valley!

AMENITIES

- A peaceful 27-home community with scenic mountain views
- 6 brand-new floor plans with spacious, open designs
- 3-car garages included on every floor plan
- Minutes from local shops and restaurants, Melton Hill Park, Pellissippi State Community College, the Shops at Turkey Creek, and Hardin Valley Schools

CONTACT US

ABOUT

The Foundry at Hardin Valley is a peaceful community of only 27 homesites offering peaceful living with easy access to Knoxville, Farragut, and Oak Ridge. The Foundry offers spacious homes featuring open-concept floor plans, modern finishes, and the convenience of 3-car garages included with every design. The community offers six brand-new floor plans, each thoughtfully crafted with our clients' most requested home features.

The Foundry is located just minutes from local shops and restaurants in Hardin Valley, the Shops at Turkey Creek, Melton Hill Park, Pellissippi State Community College, and Hardin Valley Schools. Outdoors enthusiasts will appreciate easy access to fishing, boating, and hiking at the nearby Melton Hill Park. Explore our new floor plans, and create your home in The Foundry at Hardin Valley!

AMENITIES

- An upscale 27-home community with scenic mountain views
- 6 brand-new floor plans with spacious, open designs
- 3-car garages included on every floor plan
- Convenient access to award-winning Hardin Valley schools, local parks, West Knoxville/Farragut amenities, shops, and restaurants

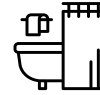
DOVER



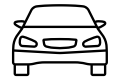
Home Features



4-5
Bedrooms



3.5-4.5
Bathrooms



3
Garage Bays


Square Footage

Total Living Area 3561+ Sq. Ft.

1st Floor 2290+ Sq. Ft.

2nd Floor 1271+ Sq. Ft.

Contact

 865-966-8700

 info@saddlebrookproperties.com

 saddlebrookproperties.com

Social



Saddlebrook Properties, LLC uses pictures, elevations and floor plans for illustrative marketing purposes only. Saddlebrook's working construction documents & codes take precedent in guiding the constructions of each home. Measurements, prices and specifications are subject to change without notice. All offerings are subject to errors and omissions

DOVER

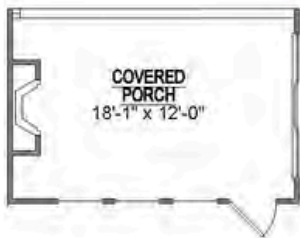
1st Floor

Key Features

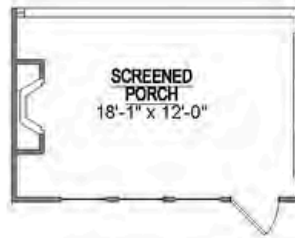
- 3-Car Garage
- Dramatic Vaulted Great Room and Kitchen Area
- Elegant Owner's Suite with Luxury Ensuite
- Private Covered Porch Retreat
- Grand 10' Ceilings with 8' Doorways
- Main-Level Guest Suite
- 2 Guest Bedrooms and Bath



1st Floor Options



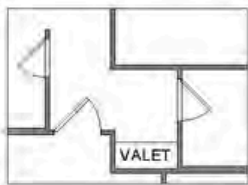
Optional Outdoor
Fireplace



Optional Screened
Porch



Optional Deluxe
Owners Bath



Optional Valet



Optional Study

DOVER

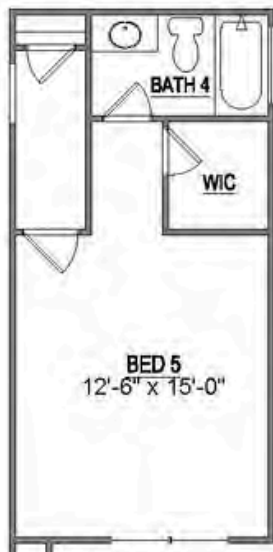
2nd Floor

Key Features

- Versatile Loft Area
- Spacious Attic Storage
- Additional Finished Storage
- 1 Bedrooms
- 1 Bathroom



2nd Floor Options



Optional Bed 5
& Bath 4

EDWIN



EUROPEAN



FARMHOUSE

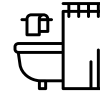


FRENCH COUNTRY

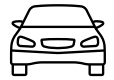
Home Features



3-5
Bedrooms



2.5-4
Bathrooms



3
Garage Bays


Square Footage

Total Living Area 3292+ Sq. Ft.

1st Floor 2157+ Sq. Ft.

2nd Floor 1135+ Sq. Ft.

Contact

 865-966-8700

 info@saddlebrookproperties.com

 saddlebrookproperties.com

Social



Saddlebrook Properties, LLC uses pictures, elevations and floor plans for illustrative marketing purposes only. Saddlebrook's working construction documents & codes take precedent in guiding the constructions of each home. Measurements, prices and specifications are subject to change without notice. All offerings are subject to errors and omissions

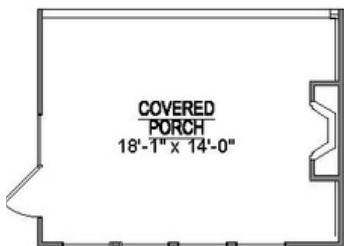
1st Floor

Key Features

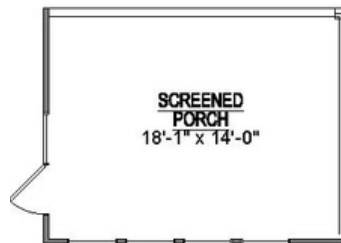
- 3-Car Garage
- Luxurious Main-Level Owner's Suite with Spa-Inspired Ensuite
- Private Covered Porch Retreat
- Grand 10' Ceilings with 8' Doorways
- Main-Level Flex Room



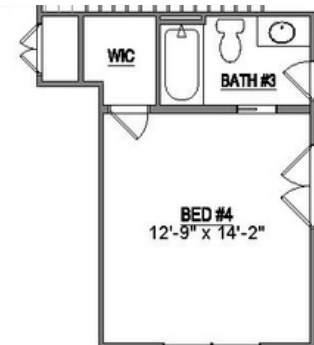
1st Floor Options



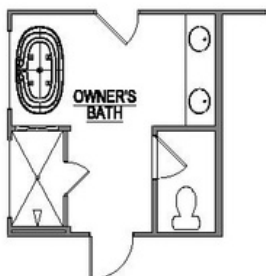
Optional Outdoor
Fireplace



Optional Screened
Porch



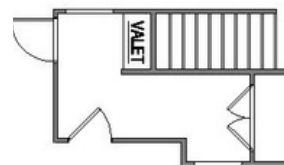
Optional Bed 4
& Bath 3



Optional Deluxe
Owners Bath



Optional Utility
Sink



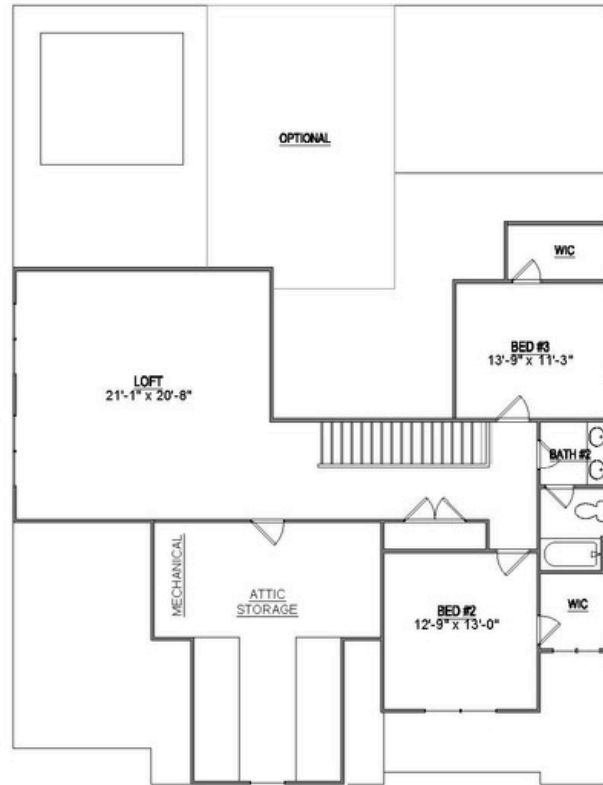
Optional Valet

Saddlebrook Properties, LLC uses pictures, elevations and floor plans for illustrative marketing purposes only. Saddlebrook's working construction documents & codes take precedent in guiding the constructions of each home. Measurements, prices and specifications are subject to change without notice. All offerings are subject to errors and omissions.

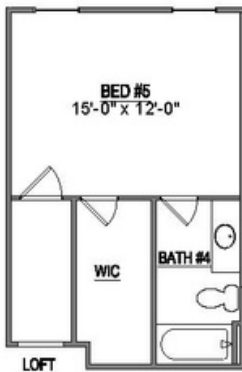
2nd Floor

Key Features

- Expansive Loft Area
- Generous Attic Storage
- 2 Bedrooms
- 1 Bathroom



2nd Floor Options



Optional Bed 5 & Bath 4

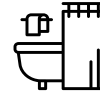
EMORY



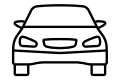
Home Features



4-5
Bedrooms



3-4
Bathrooms



3
Garage Bays


Square Footage

Total Living Area 3133+ Sq. Ft.

1st Floor 1977+ Sq. Ft.

2nd Floor 1136+ Sq. Ft.

Contact

 865-966-8700

 info@saddlebrookproperties.com

 saddlebrookproperties.com

Social

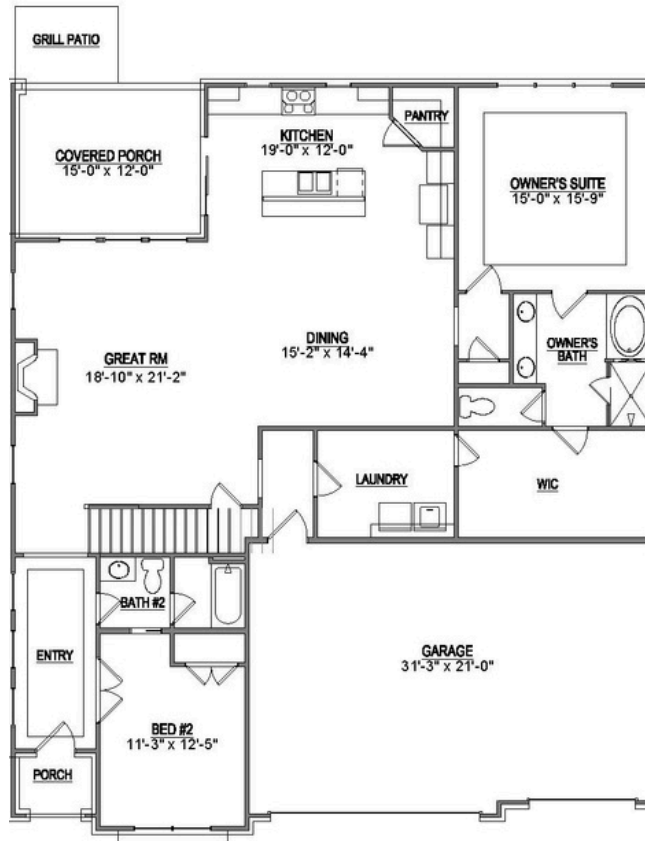


Saddlebrook Properties, LLC uses pictures, elevations and floor plans for illustrative marketing purposes only. Saddlebrook's working construction documents & codes take precedent in guiding the constructions of each home. Measurements, prices and specifications are subject to change without notice. All offerings are subject to errors and omissions

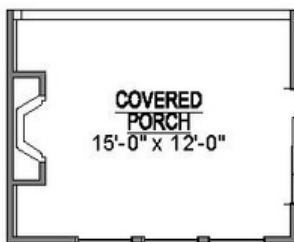
1st Floor

Key Features

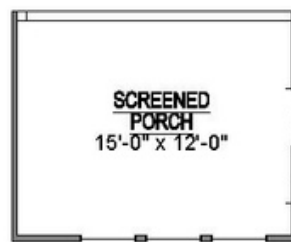
- 3-Car Garage
- Luxurious Main-Level Owner's Suite
- Private Covered Porch Retreat
- Grand 10' Ceilings with 8' Doorways
- Main-Level Guest Suite



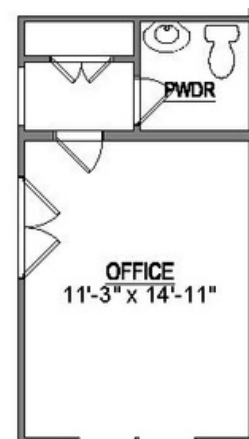
1st Floor Options



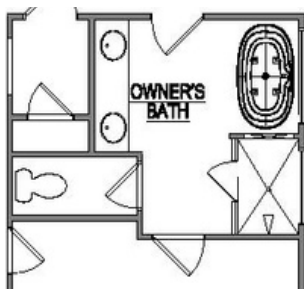
Optional Outdoor
Fireplace



Optional Screened
Porch



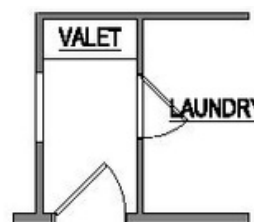
Optional Office
& Powder Rm



Optional Deluxe
Owners Bath



Optional Utility
Sink



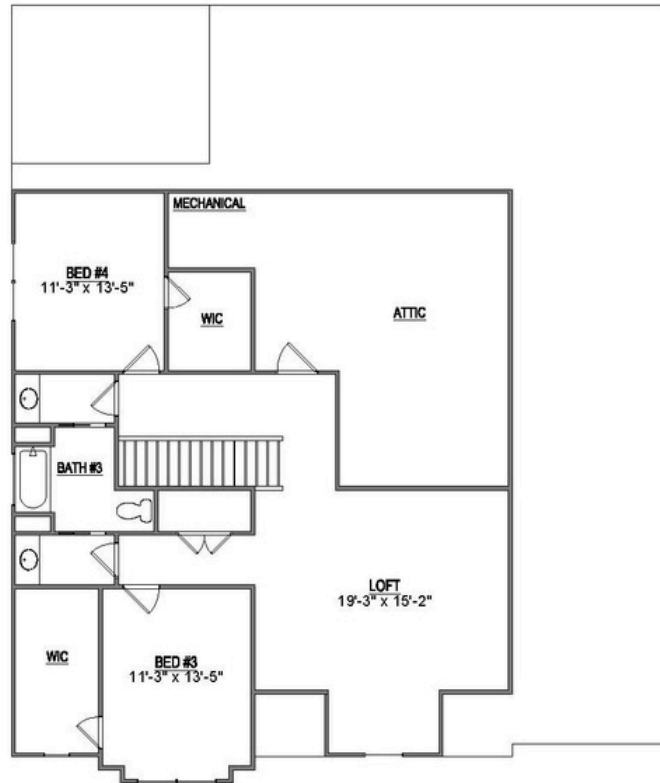
Optional Valet

Saddlebrook Properties, LLC uses pictures, elevations and floor plans for illustrative marketing purposes only. Saddlebrook's working construction documents & codes take precedent in guiding the constructions of each home. Measurements, prices and specifications are subject to change without notice. All offerings are subject to errors and omissions.

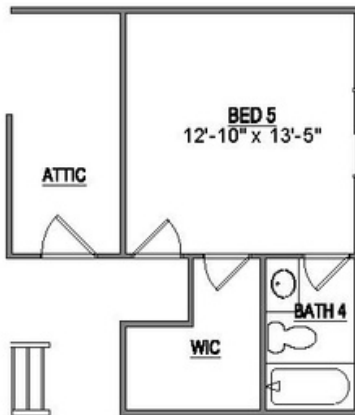
2nd Floor

Key Features

- Expansive Loft Area
- Generous Attic Storage
- 2 Bedrooms
- 1 Bathroom



2nd Floor Options



Optional Bed 5 & Bath 4

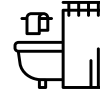
EVERETT



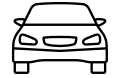
Home Features



4-6
Bedrooms



3.5-4.5
Bathrooms



3
Garage Bays


Square Footage

Total Living Area 3,074+ Sq. Ft.

1st Floor 1,817+ Sq. Ft.

2nd Floor 1,257+ Sq. Ft.

Contact

 865-966-8700

 info@saddlebrookproperties.com

 saddlebrookproperties.com

Social



Saddlebrook Properties, LLC uses pictures, elevations and floor plans for illustrative marketing purposes only. Saddlebrook's working construction documents & codes take precedent in guiding the constructions of each home. Measurements, prices and specifications are subject to change without notice. All offerings are subject to errors and omissions.

1st Floor

Key Features

- Open Concept Living
- Front Porch
- Owner's Suite on Main
- Flex Room
- Designer Kitchen
- Walk-in Pantry
- Large Mud Room
- 3rd Bay Garage



1st Floor Options



Optional 3rd Garage Bay
on 2 Car Garage



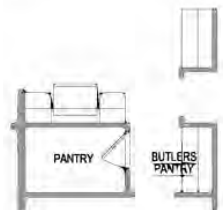
Optional Study
Instead of Garage



Optional 5th Bedroom
and 4th Bathroom



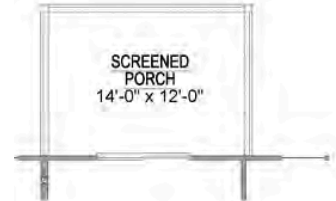
Optional Covered Porch



Optional Butlers Pantry



Optional Valet



Optional Screened Porch

EVERETT



2nd Floor

Key Features

- 3 Bedrooms w/ Walk-in Closets
- 2 Full Baths
- Spacious Loft
- Walk-in Attic Storage



2nd Floor Options



Optional 5th or 6th
Bedroom Instead of Loft

Saddlebrook Properties, LLC uses pictures, elevations and floor plans for illustrative marketing purposes only. Saddlebrook's working construction documents & codes take precedent in guiding the constructions of each home. Measurements, prices and specifications are subject to change without notice. All offerings are subject to errors and omissions.

HOLSTON



Home Features



4-5
Bedrooms



3-4
Bathrooms



3
Garage Bays




Square Footage

Total Living Area 3300+ Sq. Ft.

1st Floor 2232+ Sq. Ft.

2nd Floor 1068+ Sq. Ft.

Contact

 865-966-8700

 info@saddlebrookproperties.com

 saddlebrookproperties.com



Social



Saddlebrook Properties, LLC uses pictures, elevations and floor plans for illustrative marketing purposes only. Saddlebrook's working construction documents & codes take precedent in guiding the constructions of each home. Measurements, prices and specifications are subject to change without notice. All offerings are subject to errors and omissions

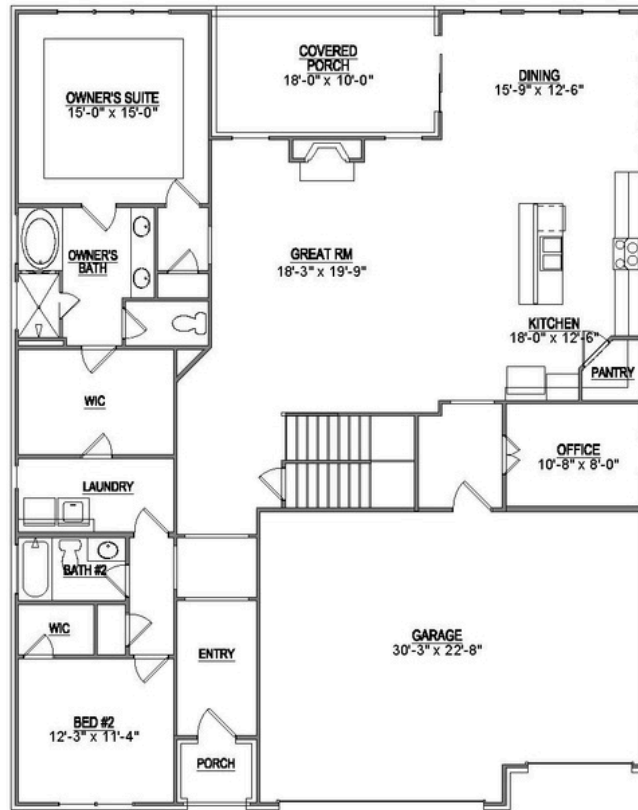
HOLSTON



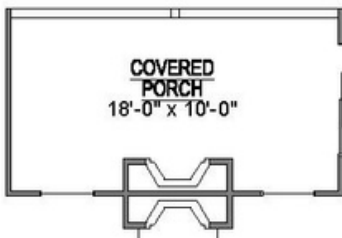
1st Floor

Key Features

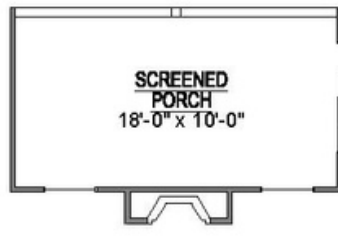
- 3-Car Garage
- Dramatic 2-Story Entry
- Elegant Owner's Suite with Luxury Ensuite
- Private Covered Porch Retreat
- Grand 10' Ceilings with 8' Doorways
- Main-Level Guest Suite



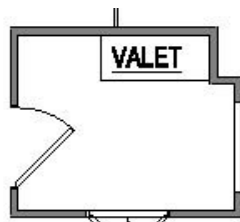
1st Floor Options



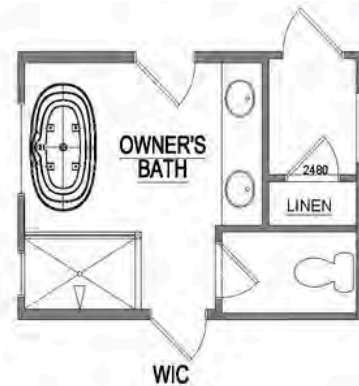
Optional Outdoor
Fireplace



Optional Screened
Porch



Optional Valet



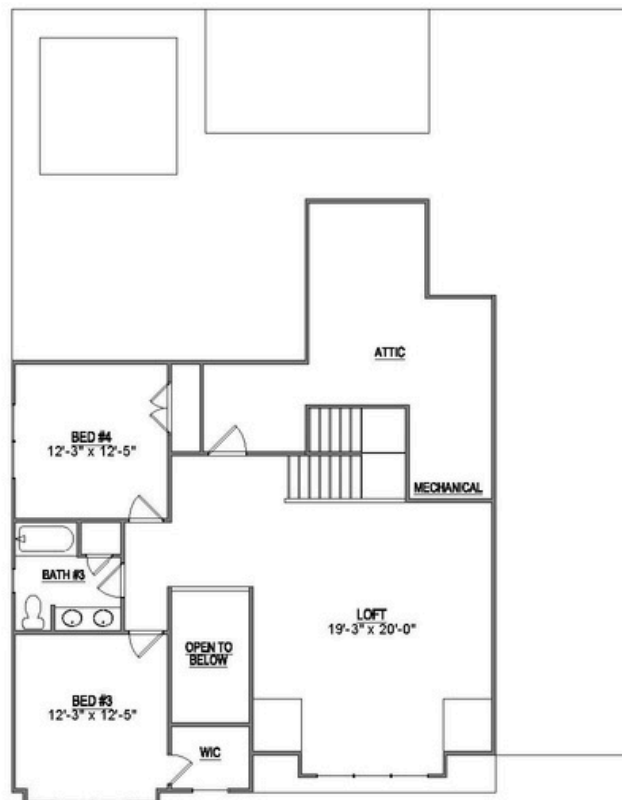
Optional Deluxe
Owners Bath

Saddlebrook Properties, LLC uses pictures, elevations and floor plans for illustrative marketing purposes only. Saddlebrook's working construction documents & codes take precedent in guiding the constructions of each home. Measurements, prices and specifications are subject to change without notice. All offerings are subject to errors and omissions.

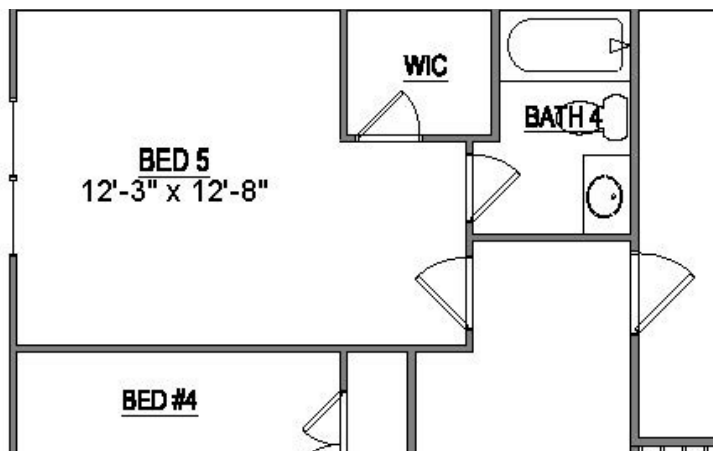
2nd Floor

Key Features

- Versatile Loft Area
- Spacious Attic Storage
- 2 Bedrooms
- 1 Bathroom



2nd Floor Options



Optional Bed 5
& Bath 4

MARTIN



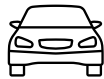
Home Features



4-5
Bedrooms



2.5-4
Bathrooms



3
Garage Bays

Square Footage

Total Living Area 2,990+ Sq. Ft.

1st Floor 1,915+ Sq. Ft.

2nd Floor 1,075+ Sq. Ft.

Contact



865-966-8700



info@saddlebrookproperties.com

saddlebrookproperties.com

Social



Saddlebrook Properties, LLC uses pictures, elevations and floor plans for illustrative marketing purposes only. Saddlebrook's working construction documents & codes take precedent in guiding the constructions of each home. Measurements, prices and specifications are subject to change without notice. All offerings are subject to errors and omissions.

1st Floor

Key Features

- Open Concept Living
- Owner's Suite on Main
- Two Story Great Room & Foyer
- Gourmet Kitchen with Adjoining Dining Room
- Flex Room
- Walk-in Pantry
- Powder Room
- 3rd Bay Garage



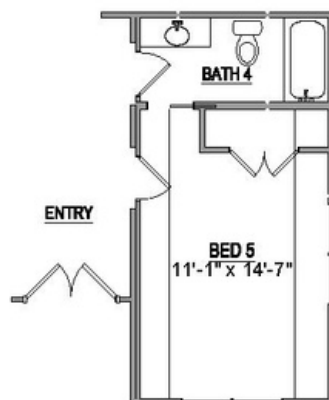
1st Floor Options



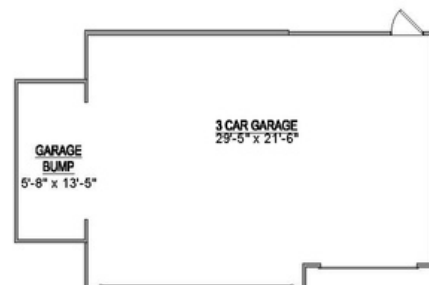
Optional Covered Porch



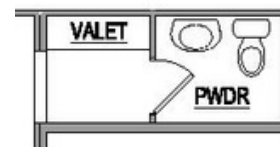
Optional Screened Porch



Optional 5th Bedroom and 4th Bathroom



Optional Garage Bump

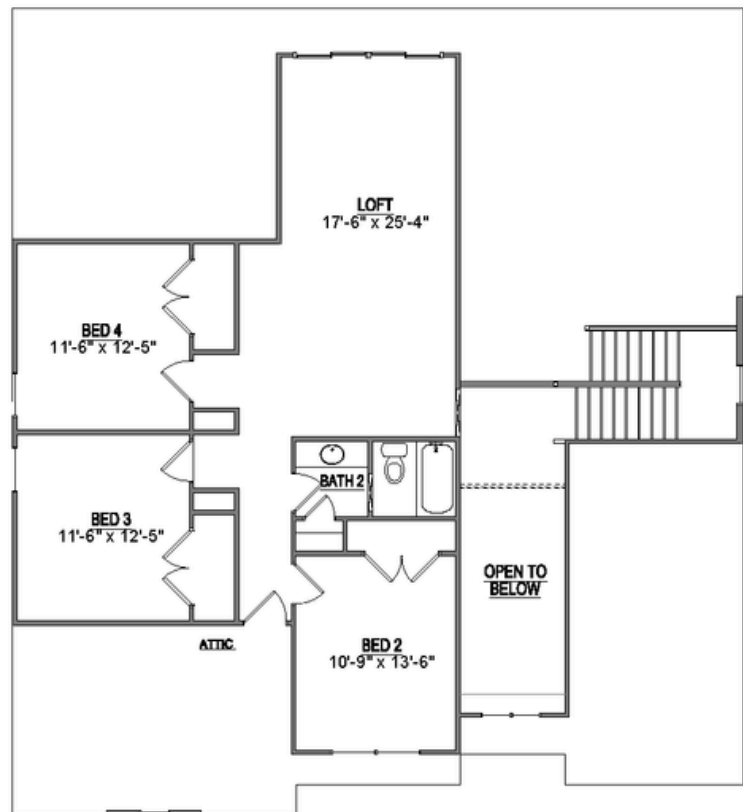


Optional Valet

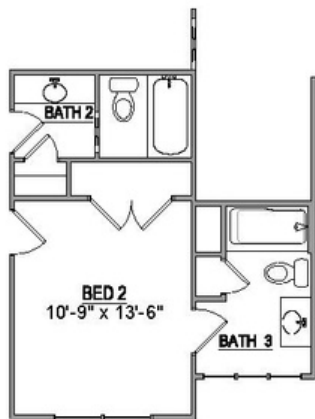
2nd Floor

Key Features

- Spacious Loft
- 3 Bedrooms
- 1 Full Bathroom
- Walk-in Attic



2nd Floor Options



Optional 3rd Bathroom

OXFORD



EUROPEAN



FARMHOUSE

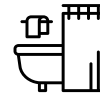


FRENCH COUNTRY

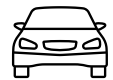
Home Features



4-5
Bedrooms



3-4
Bathrooms



3
Garage Bays


Square Footage

Total Living Area 3237+ Sq. Ft.

1st Floor 2098+ Sq. Ft.

2nd Floor 1139+ Sq. Ft.

Contact

 865-966-8700

 info@saddlebrookproperties.com

 saddlebrookproperties.com

Social



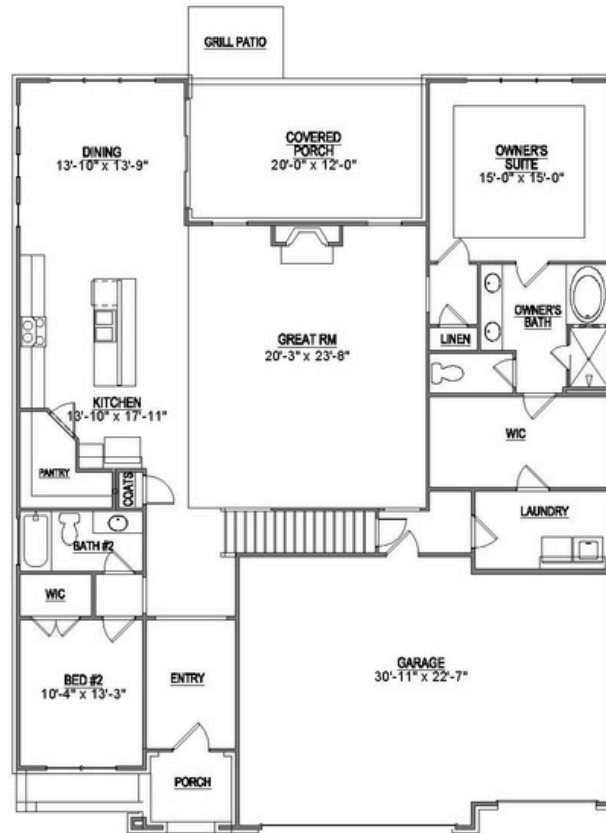
Saddlebrook Properties, LLC uses pictures, elevations and floor plans for illustrative marketing purposes only. Saddlebrook's working construction documents & codes take precedent in guiding the constructions of each home. Measurements, prices and specifications are subject to change without notice. All offerings are subject to errors and omissions

OXFORD

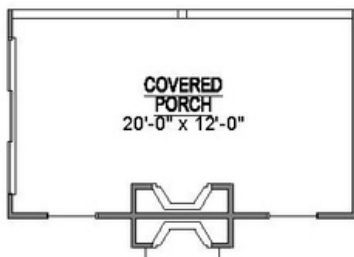
1st Floor

Key Features

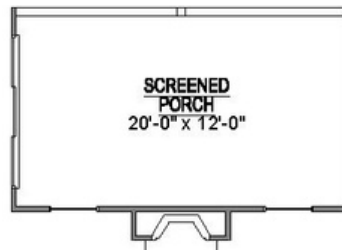
- 3-Car Garage
- Dramatic 2-Story Entry
- Owner's Suite with Spa-Inspired Ensuite
- Private Covered Porch Retreat
- Grand 10' Ceilings with 8' Doorways
- Main-Level Guest Suite
- Chef-Inspired Kitchen



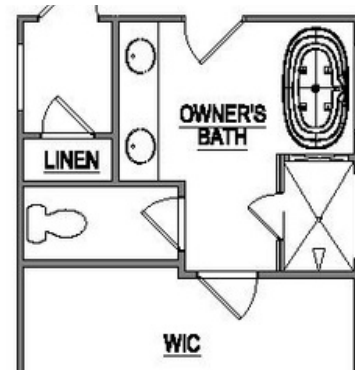
1st Floor Options



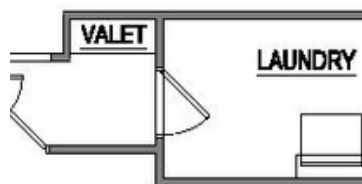
Optional Outdoor
Fireplace



Optional Screened
Porch



Optional Deluxe
Owners Bath



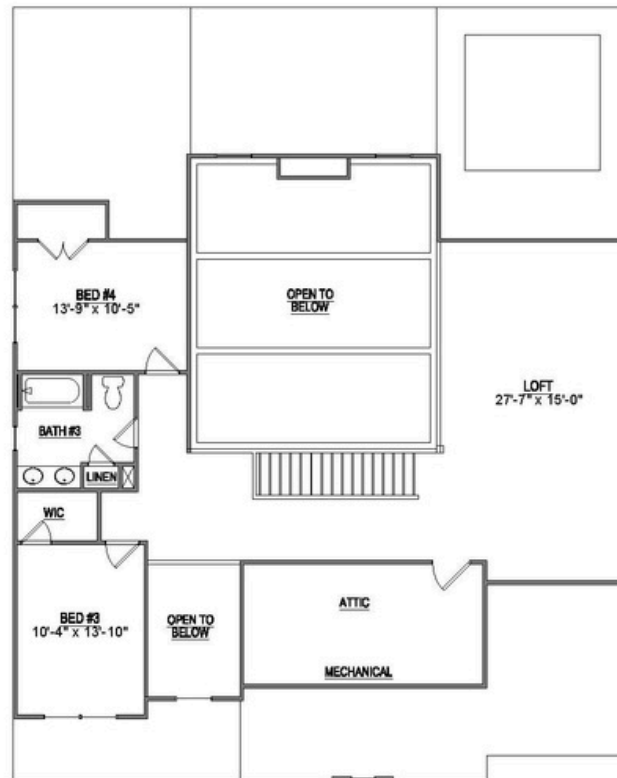
Optional Valet

OXFORD

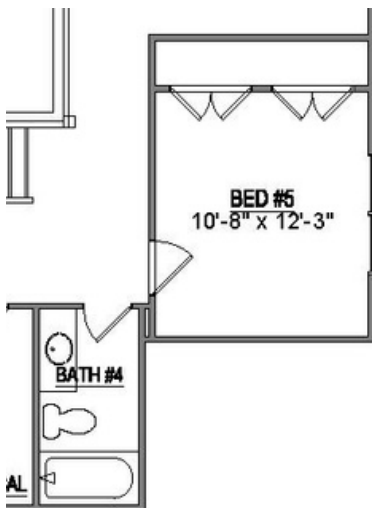
2nd Floor

Key Features

- Expansive Loft Area
- Generous Attic Storage
- 2 Bedrooms
- 1 Bathroom



2nd Floor Options



Optional Bed 5
& Bath 4

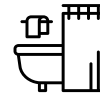
STAFFORD



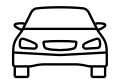
Home Features



4-6
Bedrooms



3-4
Bathrooms



3
Garage Bays


Square Footage

Total Living Area 3147+ Sq. Ft.

1st Floor 2112+ Sq. Ft.

2nd Floor 1035+ Sq. Ft.

Contact

 865-966-8700

 info@saddlebrookproperties.com

 saddlebrookproperties.com

Social



Saddlebrook Properties, LLC uses pictures, elevations and floor plans for illustrative marketing purposes only. Saddlebrook's working construction documents & codes take precedent in guiding the constructions of each home. Measurements, prices and specifications are subject to change without notice. All offerings are subject to errors and omissions

STAFFORD



1st Floor

Key Features

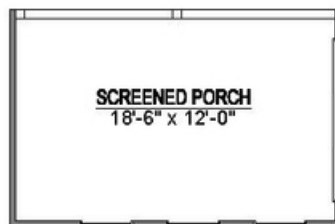
- 3-Car Garage
- Private Main-Level Owner's Suite
- Private Covered Porch Retreat
- Grand 10' Ceilings with 8' Doorways
- Main-Level Guest Suite
- Open Concept Living and Entertaining Spaces



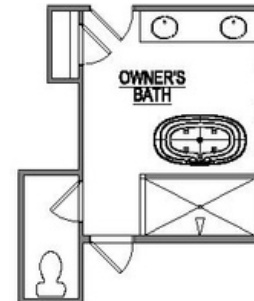
1st Floor Options



Optional Outdoor
Fireplace



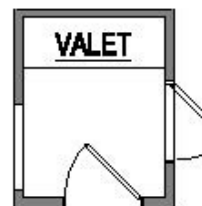
Optional Screened
Porch



Optional Deluxe
Owners Bath



Optional Utility
Sink



Optional Valet

Saddlebrook Properties, LLC uses pictures, elevations and floor plans for illustrative marketing purposes only. Saddlebrook's working construction documents & codes take precedent in guiding the constructions of each home. Measurements, prices and specifications are subject to change without notice. All offerings are subject to errors and omissions.

STAFFORD

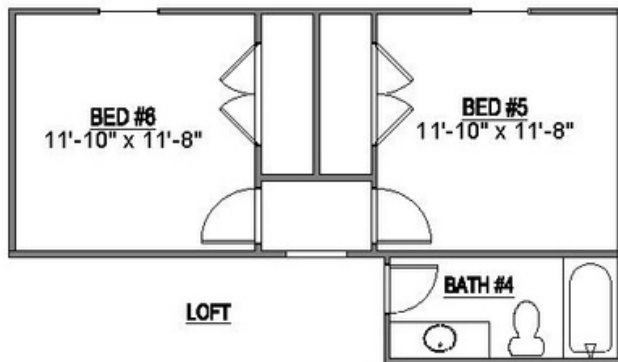
2nd Floor

Key Features

- Versatile and Spacious Loft Area
- Generous Attic Storage for Seasonal Items and More
- 2 Bedrooms
- 1 Bathroom



2nd Floor Options



Optional Bed 5, Bed 6 &
Bath 4

WINCHESTER



EUROPEAN



FARMHOUSE

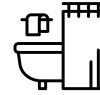


FRENCH COUNTRY

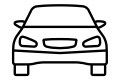
Home Features



4-5
Bedrooms



4
Bathrooms



3
Garage Bays


Square Footage

Total Living Area 3277+ Sq. Ft.

1st Floor 2206+ Sq. Ft.

2nd Floor 1071+ Sq. Ft.

Contact

 865-966-8700

 info@saddlebrookproperties.com

 saddlebrookproperties.com

Social



Saddlebrook Properties, LLC uses pictures, elevations and floor plans for illustrative marketing purposes only. Saddlebrook's working construction documents & codes take precedent in guiding the constructions of each home. Measurements, prices and specifications are subject to change without notice. All offerings are subject to errors and omissions

WINCHESTER



1st Floor

Key Features

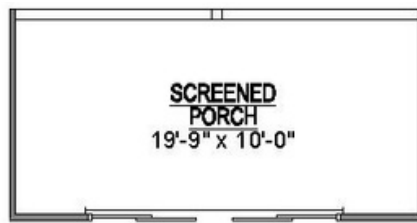
- 3-Car Garage
- Grand 2-Story Naturally Lit Entryway
- Private Covered Porch Retreat
- Eye-Catching Ceiling Detail in Great Room
- Luxurious Ensuite
- Main Level Guest Suite
- Dedicated Study



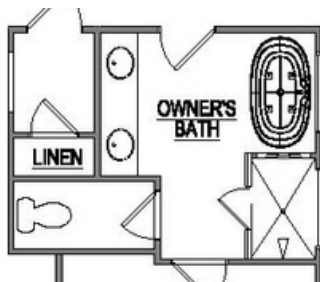
1st Floor Options



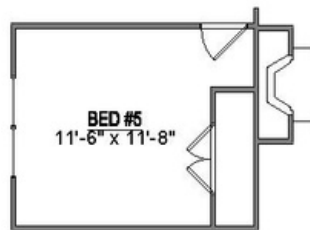
Optional Outdoor
Fireplace



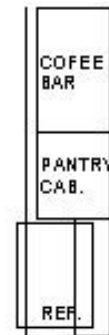
Optional Screened
Porch



Optional Deluxe
Owners Bath



Optional Bed 5



Optional Coffee
Bar

Saddlebrook Properties, LLC uses pictures, elevations and floor plans for illustrative marketing purposes only. Saddlebrook's working construction documents & codes take precedent in guiding the constructions of each home. Measurements, prices and specifications are subject to change without notice. All offerings are subject to errors and omissions.

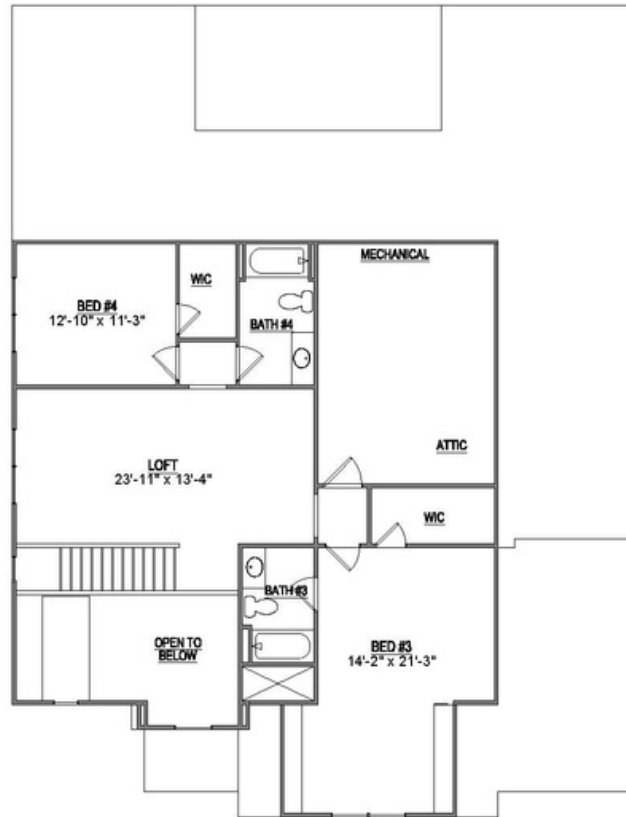
WINCHESTER



2nd Floor

Key Features

- Central Loft Area
- Generous Attic Storage
- 2 Bedrooms
- 2 Bathroom



2nd Floor Options