

HUDSON



EUROPEAN



FARMHOUSE

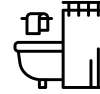


TRADITIONAL

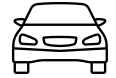
Home Features



3-4
Bedrooms



2.5-3.5
Bathrooms



3
Garage Bays


Square Footage

Total Living Area 2,669+ Sq. Ft.

1st Floor 2,246+ Sq. Ft.

2nd Floor 423+ Sq. Ft.

Contact

 865-966-8700

 info@saddlebrookproperties.com

 saddlebrookproperties.com

Social



Saddlebrook Properties, LLC uses pictures, elevations and floor plans for illustrative marketing purposes only. Saddlebrook's working construction documents & codes take precedent in guiding the constructions of each home. Measurements, prices and specifications are subject to change without notice. All offerings are subject to errors and omissions.

1st Floor

Key Features

- Open Concept Living
- Owner's Suite on Main
- Walk-in Kitchen Pantry
- Large Main level Laundry Room
- 2 Additional Bedrooms with Full Bathroom
- Designer Kitchen with Adjoining Dining Room
- Powder Room
- Spacious Covered Porch
- 3-Car Garage



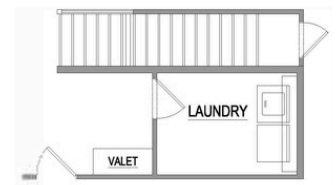
1st Floor Options



Optional Screened Porch



Optional Extended Covered Porch

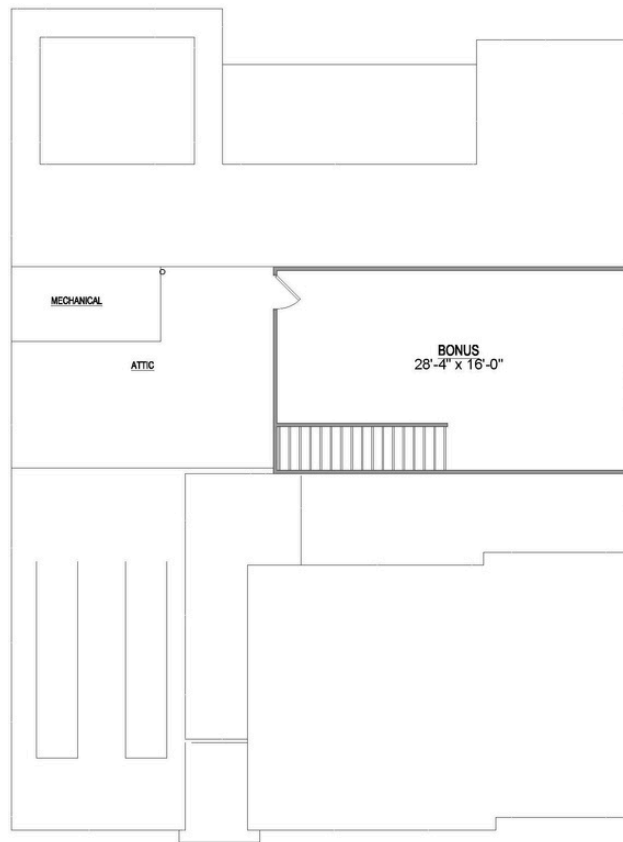


Optional Laundry with Valet

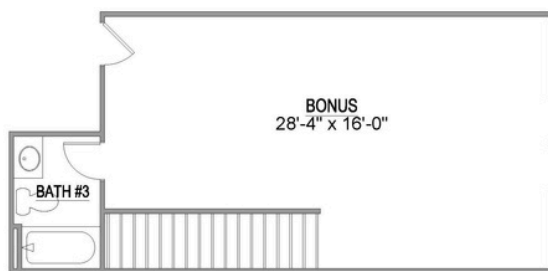
2nd Floor

Key Features

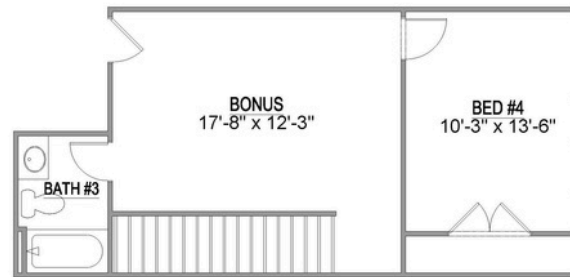
- Large Bonus Room
- Walk-in Attic Storage



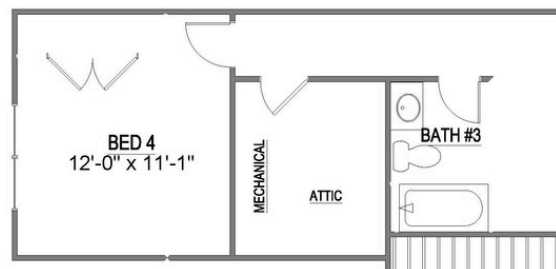
2nd Floor Options



Optional 3rd Bathroom



Optional 3rd Bathroom and 4th Bedroom



Optional Alternate 4th Bedroom and 3rd Bathroom

Saddlebrook Properties, LLC uses pictures, elevations and floor plans for illustrative marketing purposes only. Saddlebrook's working construction documents & codes take precedent in guiding the constructions of each home. Measurements, prices and specifications are subject to change without notice. All offerings are subject to errors and omissions.